

ALBENT

Engineering Services

Transportations

Roads

Mechanical

Electrical

Pipe Line Excavation

Network System

Cling



INTRODUCING OURSELVE

We have been providing our clients with reliable solution to their most complex projects like

Transportations , Roads

Industrial Projects

Mechanical facilities

Pipe line Exvation

Electrical facilities

Cling services

Since Established on 03/10/2007 Quality and good Performance is our prime motive

The key to our success is our commitment to quality, our continuous investment and training in the latest Technology and our Focus on serving the Nation. With our teams you will find the experience, expertise and integrity necessary to manage and complete many projects **on time and within budget.**

OUR PROFILE



Our Company is the name behind many of the Middle East's most advanced and prestigious Organisations. Since 2007, we have been providing our clients with reliable solutions to their most complex construction challenges. Today, we are recognized as a regional leader in the industry, for our strength in traditional construction methods and for our creative, fresh approach to cutting edge technologies and delivery systems. Our expertise spans the construction industry spectrum, from smaller renovations to multimillion Rail Projects. We specialize in Landscaping, Asphaltting works, Waterproofing, Pest Control and construction of Mass Villas, Commercial Buildings, Fabricating sheds, stone pitching, Interlock & Kerb Stone laying, cable & Pipe line laying.

Our success is driven by more than building some of the most advanced facilities for our corporate, institutional and government clients. More and more of our clients are turning to us for our distinctive ability to implement innovative project management techniques and to serve as a reliable provider of knowledge driven solutions for their complex construction projects.

Our team of construction professionals offers a single source solution for all of your construction related needs. Whether its restoration, site preparation, new facility or facility renovation, we have the experience and personnel to provide the highest quality construction on schedule and within budget .we support our clients from project inception, to the commissioning of the fully operational facility. And our network of local offices enables us to offer our clients the dual advantages of a strong local presence and broad geographic reach.

OUR APPROACH

Building a successful project is contingent on the management capabilities of the company performing the work and always based on client satisfaction. Continuously building quality projects requires a companywide mindset that unites all team members behind one main purpose Building Excellence. At our company, we believe integrity and high performance standards must come from the top, this is why our senior executives are involved in our projects from day one and stays involved until the final closeout.

The key to professional project execution is fundamental anticipate and eliminate problems before they happen. Our team works with the owners, construction team, designers and engineers, with the detail that only specialists can provide, to plan, budget and schedule every aspect of your project. Once construction begins, sound management skills, seasoned field supervision and sophisticated computer management technology work together with competent subcontractors and suppliers to keep your project on track. The result is a quality facility that is complete when promised, as promised.

OUR COMMITMENT

A commitment is only as good as the company that makes it, building facilities that are economical, reliable and efficient has been .Our team of construction professionals offers a single source solution for all of your construction related needs. Whether its restoration, site prepration, a new facility or facility renovation, we have the experience and personnel to provide the highest quality construction on schedule and within budget.

FINANCIAL STRENGTH

Our financial strength comes from the depth of our experience established our History. Our bonding capacity has grown to accommodate our largest projects and has helped us grow our management and technical resources over the years. This long standing stability, along with our commitment to building Excellence, provides our clients with peace of mind and confidence that we have the resources to stand behind our work for many years to come.

Our commitment to safety and sustainable development include ensuring that we consistently across the group in relation to safety, health, social development and the environment. we adopt a systematic approach to managing these issues to ensure compliance and to achieve continuous improvement.

QUALITY, HEALTH, SAFETY & ENVIROMENT



Our proactive approach creates value for our clients and safeguards our most important asset, our employees. Our entire team is dedicated to maintaining a safety-focused and environmentally sound business; our safety culture is promoted by each member of our evaluating safety practices on a daily basis.

Our safety program is proactive and action-oriented, everyone from management to trades people are involved in making a zero-incident workplace a reality. We use daily pre-task planning sessions, ongoing safety inspections, weekly safety meetings, safety seminars, special equipment training, safety manual reviews and email updates to assist in training our goal of zero incidents. We focus on keeping motivational messages and emotions at the forefront of everything we do-every day. Family-oriented messages remind us to keep safety at the top of our minds with posters and banners placed throughout our projects.

OUR SERVICES

Below are the list and a short description of our services

Preconstruction Services

Preconstruction Estimating: *Provide project estimating and a reliable cost model drawn from our extensive cost histories.*

Feasibility Studies: *Analyze life cycle costs for building system alternative.*

Scheduling: *Develop a complete team schedule showing who and what goes where and when.*

MEP Review: *Evaluate evolving mechanical, electrical and plumbing system concepts and coordinate engineering services.*

Constructability Review: *Help determine the ease and speed process.*

Risk Management: *Control cost, schedule and owner objectives to mitigate risk.*

Market Analysis: *Understanding the unique requirements of your project in the context of market conditions and trends.*

Cost Control: *Provide the most efficient design and construction methods to achieve value.*

Construction Services

Progress Monitoring: *Monitor actual versus forecast schedule/budget.*

Change Order Management: *Limit the need for revisions.*

Quality Control and Testing: *Validation of actual to specification.*

Labor Relations: *Proactive resolution of potential issues.*

Post – Construction Services

Commissioning: *Ensure that building systems are designed, installed and activated according to owner's operational needs.*

Lien Releases: *Severing of contractual ties to vendors.*

O&M: *Development of operation and maintenance instructions.*

Final Closeout: *Completion of punch listed items.*

General Contractor:

As a general contractor, our services begin with pricing. We bid out the job in predetermined packages, and verify the validity of the bids using our extensive cost histories. During actual construction, we manage the day to day activities on the job, including safety, quality control and adherence to the schedule. We also provide bonding for the project and hold all subcontractors contracts, unless instructed to do otherwise by the owner. We have the ability to self-perform many aspects of our work, giving us greater control over the schedule and allowing us to truly drive the project.

Construction Manager:

Our Construction Manager Team is closely involved in the planning and design phase and typically joins the project at the same time as the architect. We provide input on constructability, budget, and schedule, which reduce costs. During the construction phase, our full-time supervision team is on site, monitoring work to assure compliance with specifications, budget and schedule.

Design Builders:

Our expertise also extends to Design-Build Construction. After first examining the specifications of the owner, we team with a design firm that has extensive experience in similar projects. This Design-Build team then acts as a cohesive unit with the designer developing the buildings specifications, while we perform the constructability review.



PROFESSIONALS



As we know professional is the basic root of the company, which helps in fast growing and spreading skills in the country with the help of job, similarly we have chosen the well qualified bachelors and Masters in Engineering with good experience in the construction field, especially Experience in the gulf. And they always stand forward for the hard and quality workmanship. They can take difficult tasks and can handle in a professional way. And they are adaptable to any environment. And we are confident that they will become the master in civil construction, whatever they are and have the capability to lead any kind of projects by which they can satisfy the clients and consultants.

SKILLED LABOURS



The skilled labors are the basic requirement for the company to deal the projects with best quality and performance in a technical way, therefore, we have selected our qualified labor group from different part of the country with a sound knowledge and experience as specially in Gulf countries to do the projects in a professionally to satisfy the Clients as well as the Consultant Engineers.

Mr.Ali Saleh Al Sahib

CHAIRMAN PERSPECTIVE:

The Chairman always keeps in his view how to improve the life style as well as what he can give to the own country Sultanate of Oman. So he has taken initiative to start the construction field with a very new technology of construction industry and he achieved the target due to his hard work, high qualification and partial approach he can understand every situation and handle very feasibly and in professional way. His

Leadership and vast experienced can asset to our business group. And even he is well aware about the Real Estate Market, eventually decided to open the construction Enterprise.

And he has selected the group of well qualified highly experienced in field of construction and Business Executives. And well experience Engineers and very skilled workers team to perform their ability in development of country.

***Mr.ALI SALEH AL SAHIB** has approached in business day by day with the assistance of our group and he will achieve their dreams INSHAHALLAH.*

" without change there is no innovation, creativity or incentive for improvement .those who initiate change will have a better opportunity to manage the change that is inevitable ".

MAN POWER LIST		
SL.NO	CATEGORY	QTY
01	Director	05
02	General Manager	01
03	Project Manager	08
04	Construction Manager	05
05	Planning Engineer	02
06	Finance Manager	01
07	Quantity Surveyor	03
08	Internal Auditor (Account)	01
09	Chief Accountant	01
10	Accountants	03
11	Material Engineer	02
12	Engineer/Supervisor	12
13	PRO	04
14	Transport Coordinator	02
15	Purchase Officer	02
16	Store keeper	05
17	Surveyors	03
18	Secretary	02
19	Foreman	15
20	Lab Technicians	03
21	Charge Hands	15
22	Steel Fixers	25
23	Carpenters	38
24	Masons	26

25	Electricians &Plumbers	49
26	HD & LD Drivers	23
27	Operators	12
28	Helpers	30

VEHICLE & EQUIPMENTS

SL.NO	DESCRIPTIONS	QTY
01	Tipper (18 Cu.m.)	15
02	Tipper (45 Cu.m.)	10
03	Water Tankers (5000 gallon)	06
04	Water Tankers (10000 gallon)	04
05	Trailer (low bed)	03
06	Trailer (high bed)	02
07	Grader	02
08	Vibrator Roller	02
09	Mini roller	05
10	Wheel Loader	02
11	66 Seat Bus	02
12	Backhoe Loader	01
13	25 Seat Mini Bus	05
14	Canter/Cargo	07
15	Excavator	02
16	Generator	05
17	Air Compressor	02
18	Pick up	15
19	Station Wagon Car	15
20	Dozer	03

OURSELVE

MR> ALI SALEH AL SAHIB constituted with diversified objects such as Civil, Mechanical, Electrical, Earth works, Aluminum works, Water proofing .Fire Fitting, Porto cabins & Network system. Our prime motto is indeed growth oriented, but we have also instituted non profiteering social and cultural bodies, as of creativity.

Conceptualized in 2007with a small amount of capital, l is a built environment service provider offering a wide variety of services dedicated to managing every aspect of a project right from its initialization to its completion.

MISSION

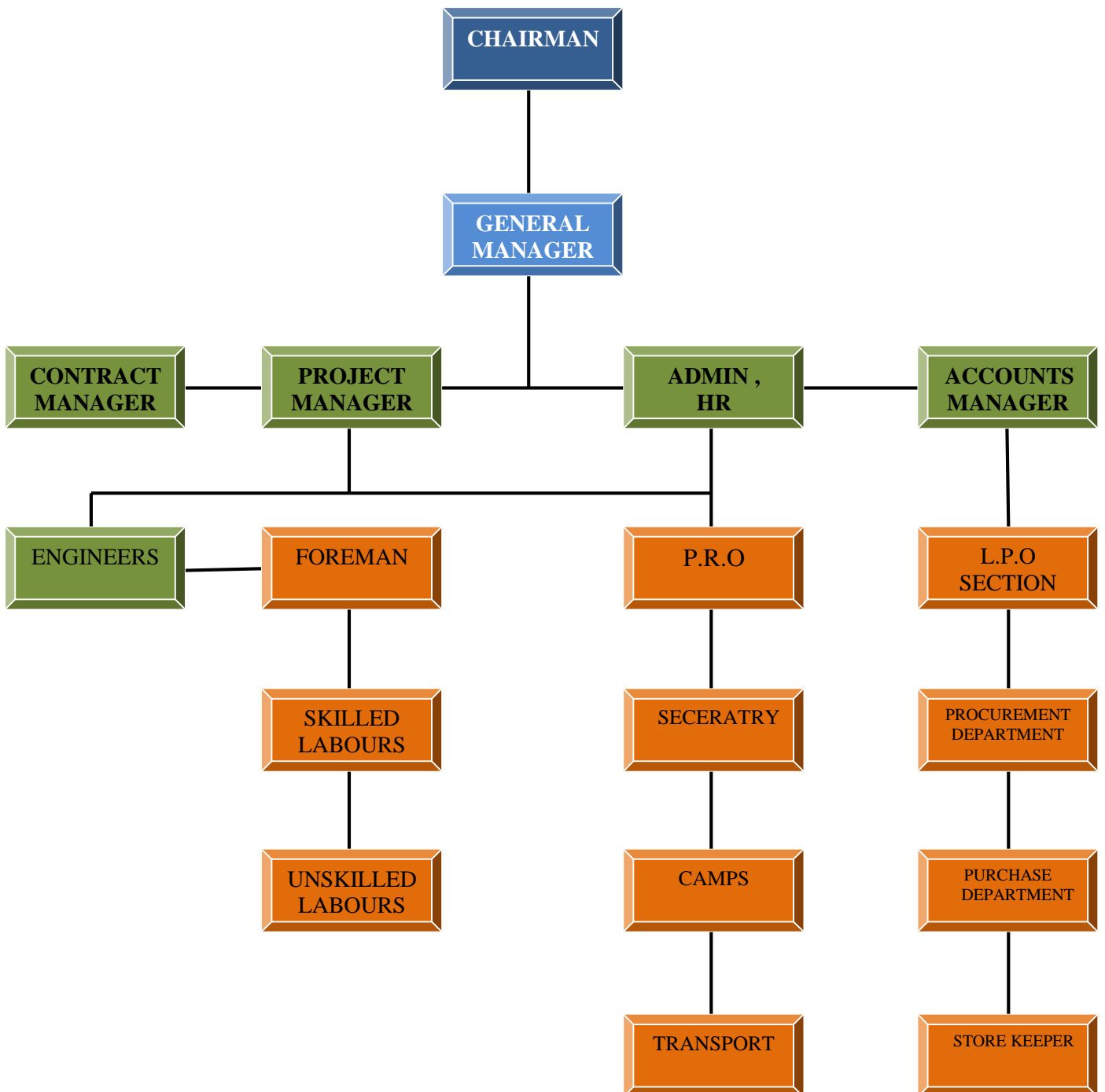
Our organization mission is to serve its clients with quality construction services, which adds value to their projects. From Initialization through post- construction, we committed to the project and the team. Our serves its clients by evaluating alternative solution, providing creativity and continuously challenging ideas to find the best options. It excels when working as part of a collaborative team to plan, develop and construct each project. Our clients participate in the process every step of the way and achieve their goals for cost, schedule and quality.

ORGANIZATION STRUCTURE

We believe that the structure of an organization to be needs to dynamic, constantly evolving and responsive to change both in the external and internal enjoiments. Our Organization structure is designed to support our business goals. It is flexible while the same time ensuring effective control and supervision.

Construction companies today face different challenges than those of their predecessors. These include the volatile nature of the economy, the dynamics of dealing in a technologically advanced global marketplace, pressures of greater competition, which force today's construction companies to respond with creativity, expertise and courage of their own.

ORGANIZATION CHAR







Seeb project Commercial Building

PDO QURN ALAM PIPE LYING





NIZWA INDUSTRIAL ESTATE



Muriya Trousim & Development Al Seifha

